



Station Approach, Theydon Bois, CM16

BUTLER & STAG



Fantastic two bedroom modern apartment set within this smart and well located development, offering easy access to Theydon Bois Train Station (Central Line).



- First Floor Two Bedroom Apartment
- Recently Decorated
- One Minute Walk To Theydon Bois Station
- Open Plan Lounge/Kitchen
- Off-street Parking & Car Garage
- Central Village Location

Acceded via a secure entrance with stairs leading to the first floor floor, the apartment boasts a large open living and kitchen area with ample space for dining and boasts far reaching views, two double bedrooms and a smart bathroom. This property also has the rare benefit of a garage and an allocated off street parking space.

The location is superb, less than a minutes stroll to the station and village, shops, pubs and restaurants are at the head of the road!

Available End of May

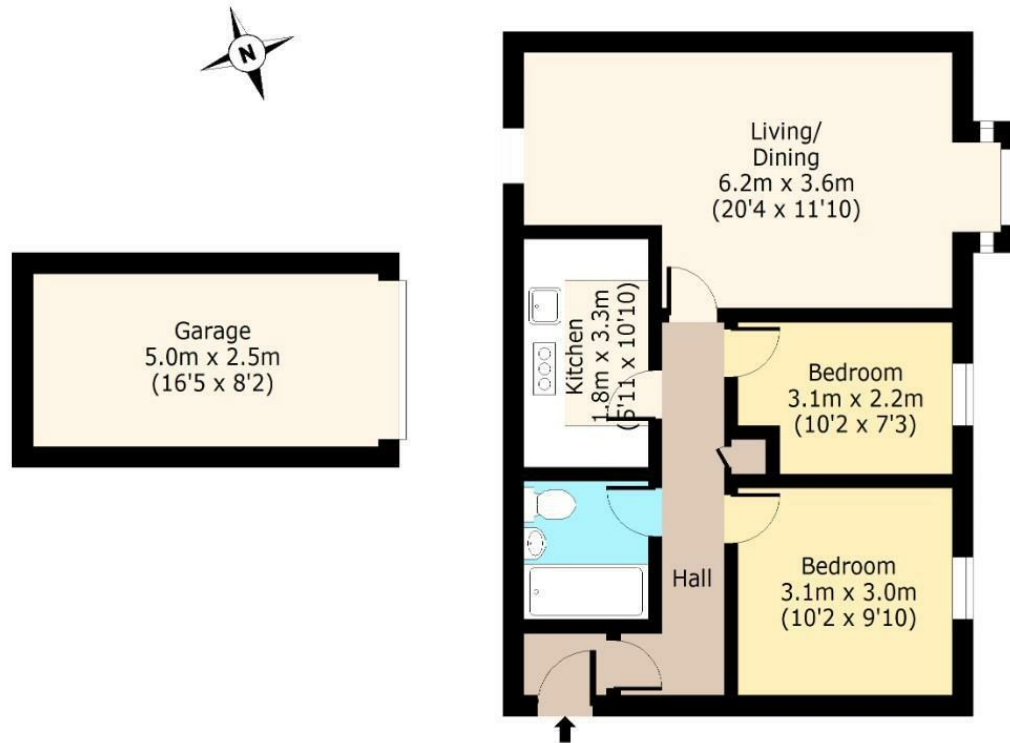




Theydon Gate,

First Floor

Approx. 58.53 Sq. meters (630 Sq. feet)



Total area (Including Garage): approx. 71.07 Sq. meters (765 Sq. feet)

Total area (Excluding Garage): approx. 58.53 Sq. meters (630 Sq. feet)

For illustration purposes only - not to scale

www.lpaplus.com

BUTLER & STAG

☎ 01992 667666

🏠 4 Forest Drive, Theydon Bois, Essex, CM16 7EY

✉ theydon@butlerandstag.com

www.butlerandstag.uk

IMPORTANT NOTICE - These particulars have been prepared in good faith and they are not intended to constitute part of an offer or contract. We have not performed a structural survey on this property and the services, appliances and specific fittings have not been tested. All photographs, measurements, floor plans and distances referred to are given as a guide and should not be relied upon.